



ENER REACH Energy Platform

OP9 Duo-Energy Generator

OSA Vessel Sealer & Divider

SR7 Ultrasonic Shears



**Tissue Sense
Technology**



**Duo-energy
Platform**



**7mm
Vessel Sealing**



**Touch Screen
Interface**

UK DISTRIBUTOR



ideal
Medical Solutions

■ INNOVATIVE EXCELLENCE ■

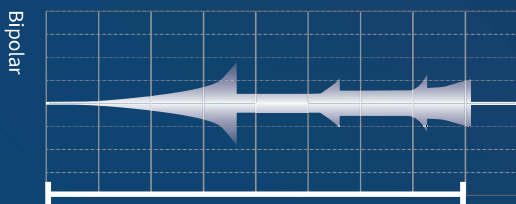
Advance Force

the all-new OP9 energy platform

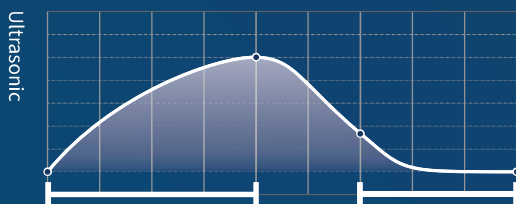


Tissue Sense Technology

Tissue Sense technology constantly monitors signals at the instrument jaw and intelligently adjusts power for optimal sealing, fast transecting and minimized heat generation.



Intelligent Sealing
Constantly monitors impedance and adjusts sealing cycle.



Responsive Activation
Intelligent Energy Output
Smooth activation

Pad Protection
Output Adjustment
Precise Thermal Control



7mm Vessel Sealing

Safe sealing capability for vessels up to 7mm with OSA and SR7 shears.



RF & Ultrasonic Duo-energy Platform



7" Touch Screen



Multi-lingual Interface



Anti-sticking Coating

20.4mm Jaw Length

23, 37, 44 cm Shaft Length

360° Continuous Rotation



One-step Close/Seal Trigger

The OSA Vessel Sealer/Divider combines a comfortable one-stop handle design with reliable sealing capabilities, delivering exceptional performance for surgeons seeking precision in vessel sealing.

OSA Series Vessel Sealer/Divider



Enhanced Ergonomics

With a long, slim, and curved jaw design, along with strong jaw retention force, the OSA facilitates effortless dissection with precision.

The streamlined one-step sealing process reduces procedure time, while the 360° continuous rotation feature enhances maneuverability and efficiency.



7mm Vessel Sealing

Featuring our exclusive Tissue Sense technology, the OSA Vessel Sealer/Divider confidently seals thick tissues and vessels up to 7mm, ensuring dependable results every time.



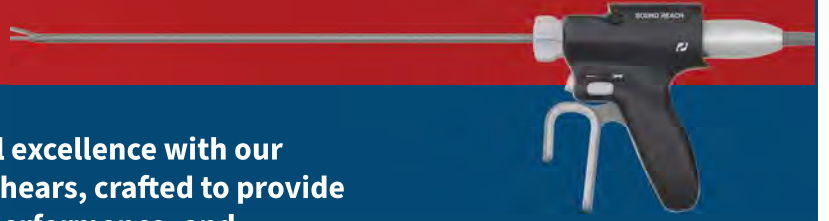
Anti-sticking Coating

Our proprietary anti-sticking coating minimizes sticking, reduces eschar buildup, and simplifies cleaning during procedures, ensuring a smoother and more efficient experience.

Specifications

Product Code	Shaft Length	Discipline	Description	QTY/BOX
OSA23	23 cm	Open Surgery	One-stop Sealing with Anti-sticking Coating, 5mm	3
OSA37	37 cm	Laparoscopic Surgery		
OSA44	44 cm			

SR7 Series Shears



Experience the next level of surgical excellence with our completely redesigned SR7 Series Shears, crafted to provide unparalleled comfort, exceptional performance, and unwavering confidence in safety.



7mm Vessel Sealing

The Advanced Hemostasis feature on the SR7 shears expand the scope of surgical applications offering the assurance of reliable and safe 7mm vessel sealing.



Enhanced Jaw Design

Our new jaw design elevates the grasping force of closed clamps, simplifying tissue manipulation and delivering faster transection speeds and safer sealings.



Comfortable Ergonomics

The thoughtfully contoured handle of the SR7 shears fits perfectly into surgeons' hands, while the soft, concave, and elastic padding enhances gripping force, reducing the risk of slipping during surgeries. Prioritize your comfort and focus solely on your performance.

Specifications

Product Code	Vessel Sealing	Shaft Length	Discipline
SRE14	7 mm	14 cm	Open, ENT procedures
SRE23		23 cm	General, Pediatric procedures
SRE36		36 cm	General, Bariatric, Gynecology, Urology, Colorectal Endoscopic procedures
SRE45		45 cm	Procedures with Obese Patients

www.ideal-ms.com

admin@ideal-ms.com

020 8773 7844

Manufacturer

Reach Surgical
120 Xinxing Road
West Zone, TEDA
300462 Tianjin
China

T: +86-22-25326259



UK DISTRIBUTOR

2 Brook Way
Leatherhead
Surrey
KT22 7NA